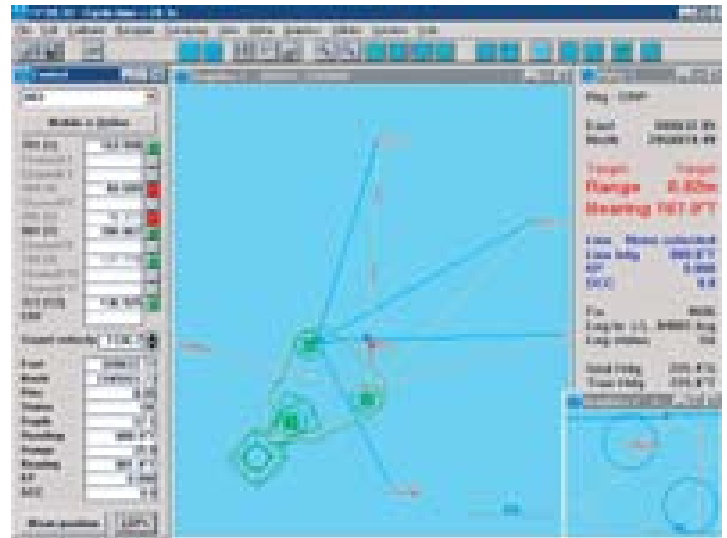


AquaNav is designed to make calibrating and navigating within LBL arrays easier enabling the operator to maintain control.

The software suite is acclaimed for its ability to calculate a position fix under difficult acoustic conditions.

## APPLICATIONS

- Box-in compatts
- Calibrate arrays
- Display DXF files
- Navigate to waypoints and run survey lines
- Monitor inclinometer and Digiquartz compatts
- Read box-in and baseline data from Winfrog and APS3
- Communicate with compatts including dual band compatts
- Send data to other computers in NMEA and other formats
- Navigate PAN transducers, RovNav, MiniRovNav and simultaneous compatts
- Interface to GPS, gyro, Sonardyne PAN, RovNav, MiniRovNav and several USBL systems
- Position structures and provide structure orientation based on two compatts fixed to the structure



## HARDWARE REQUIREMENTS

- It is recommended that the minimum computer specification is a Pentium III with 64 Megabytes of RAM running Windows 95 or above,
- including Windows NT.
- A dongle is required to run the programme.
- A minimum graphics resolution of 800 x 600 is required.
- Only one serial port is required to interface to a PAN however four serial ports are recommended to provide interfacing for GPS, PAN, Gyro and position output.
- Any multiport serial card recognised by Windows can be used to provide more serial ports.
- A printer is not strictly necessary as all data and reports can be logged to disk but any printer recognised by Windows may be used.